

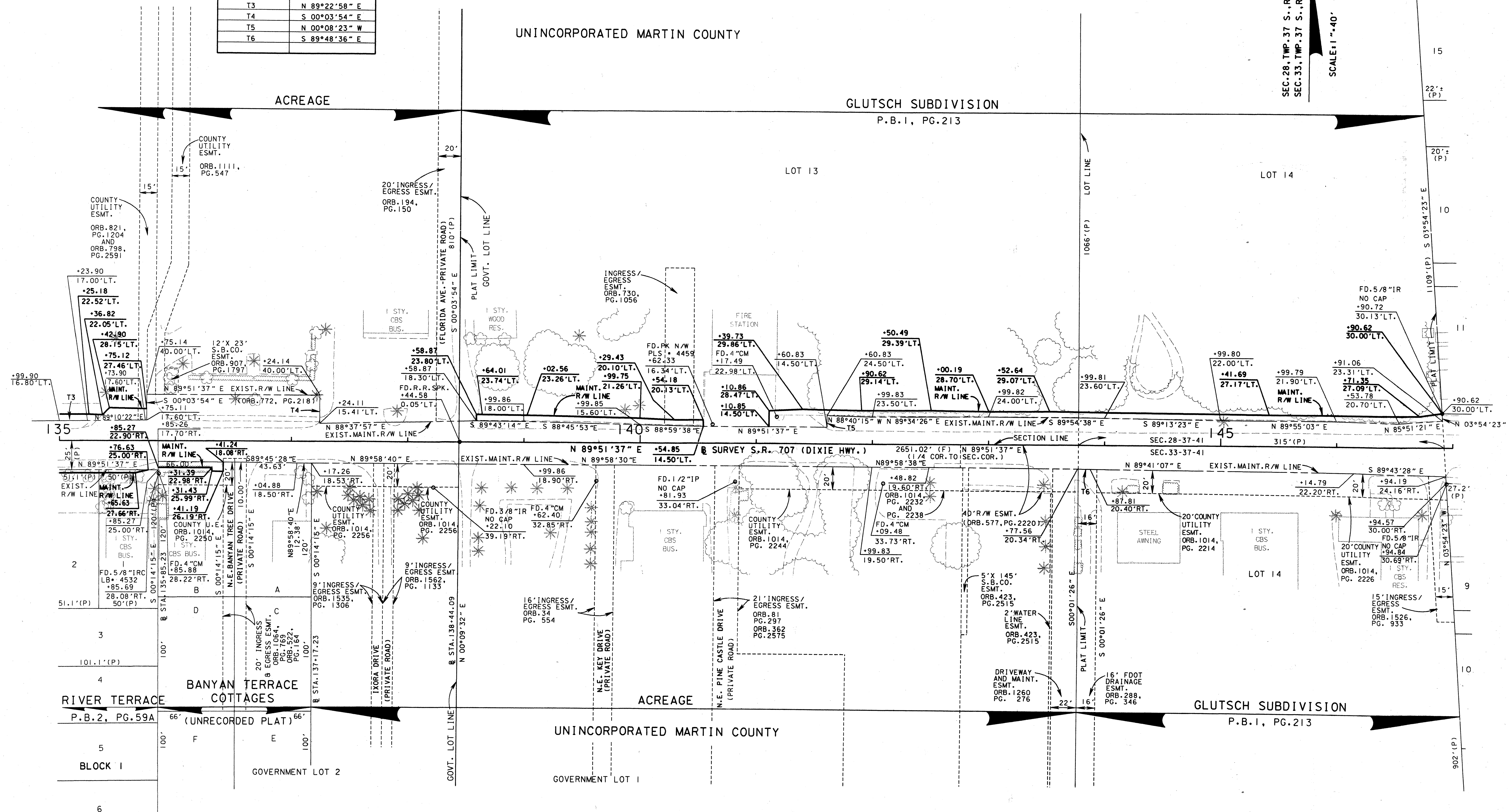
TANGENT DATA	
LINE	BEARING
T3	N 89°22'58" E
T4	S 00°03'54" E
T5	N 00°08'23" W
T6	S 89°48'36" E

UNINCORPORATED MARTIN COUNTY

GLUTSCH SUBDIVISION  
P.B.1, PG.213

SEC.28, TWP.37 S., RGE.41 E.  
SEC.33, TWP.37 S., RGE.41 E.

SCALE 1" = 40'



MAINTENANCE MAP

FLORIDA DEPARTMENT OF TRANSPORTATION  
RIGHT OF WAY MAPPING

APPROVED BY: *J. Smith* DATE: 5/2/03  
DISTRICT RIGHT OF WAY SURVEYOR

REVISION	BY	DATE	REVISION	BY	DATE

SEE SHEET 1 FOR LEGEND  
AND GENERAL NOTES

STATE ROAD 707 (DIXIE HWY.)  
FROM SAVANNAH ROAD TO ARCH STREET

FED. PROJ. NO. N/A SECTION 89030-MAINT.(4)  
STATE ROAD 707 (DIXIE HWY.) MARTIN COUNTY

MAPS PREPARED BY LB# 696  
KIMLEY-HORN AND ASSOCIATES  
FIELD BOOK NO.'S  
SEE SHEET 1  
W.P.I. No. N/A SCALE: 1" = 40'  
ITEM/SEGMENT NO. 4035911 SHEET 5 OF 12